

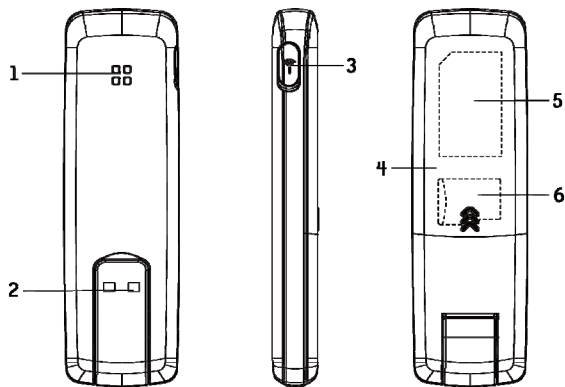
Check your system requirements

1. Check you have a spare USB port (USB 1.0 or 2.0)
2. You need to be running Windows 7 / XP / Vista for a PC or OS X 10.5.11 and above for a Mac
3. The recommended system requirements are:

CPU	1GHz Pentium or above
Hard Disk	At least 50MB free space
RAM	512M or above
Display	800 x 600 minimum

4. You need to have **Administrator** rights to install and run the software
5. We suggest you switch off your anti-virus software before installing the USB modem. In some cases protection software can prevent automatic installation. It is possible to start the installation process manually by clicking the Autorun icon when it appears.

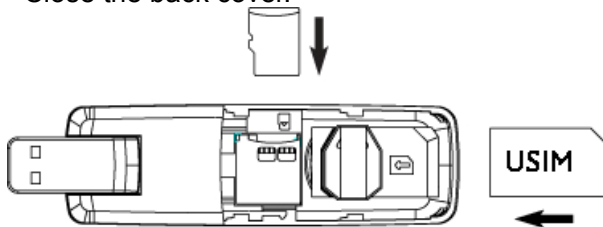
Get to know your USB Modem



1. LED Indicator	2. Rotating USB plug	3. External Antenna Port
4. Back cover	5. SIM Slot	6. MicroSD Slot

Insert your SIM Card

1. Open the slider panel on the back of your USB modem.
2. Insert your USIM card carefully as shown.
3. If you want to add a memory card you can do it now. Your USB modem supports up to 8GB MicroSD memory.
4. Close the back cover.



Tip

Remember to keep your plastic SIM card holder. It has a record of your phone number and a PIN number which you may need later.

Insert the modem into your computer

The installation and management software is pre-loaded onto your USB modem. Simply insert your modem into your computer and follow the instructions on-screen. You'll be up and connected in about 5 minutes.

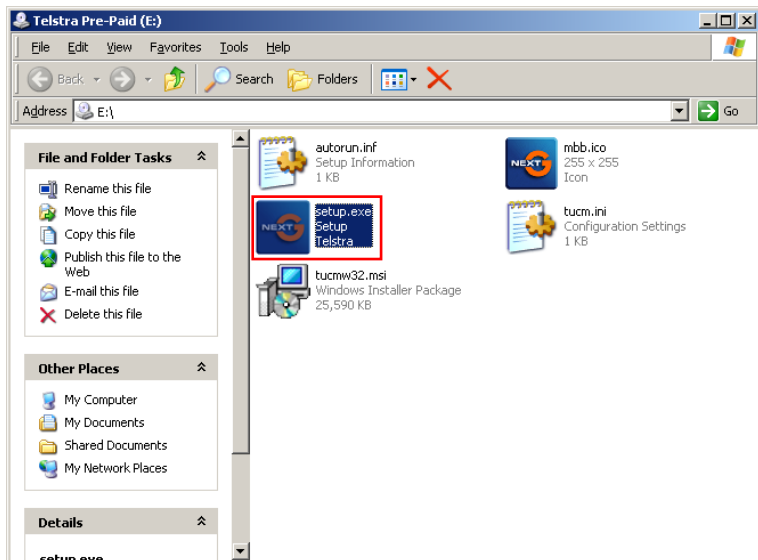
The USB modem is a Plug and Play device. Once inserted your system will automatically detect the new hardware and start to install the software. Be patient as it may take some time for your computer to recognise the modem.

If nothing happens your system configuration may be preventing Autorun.

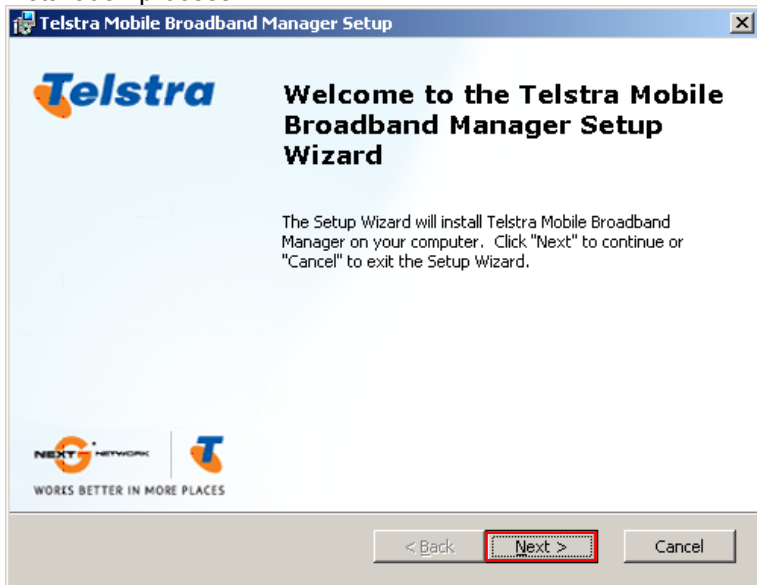
Tips to resolve

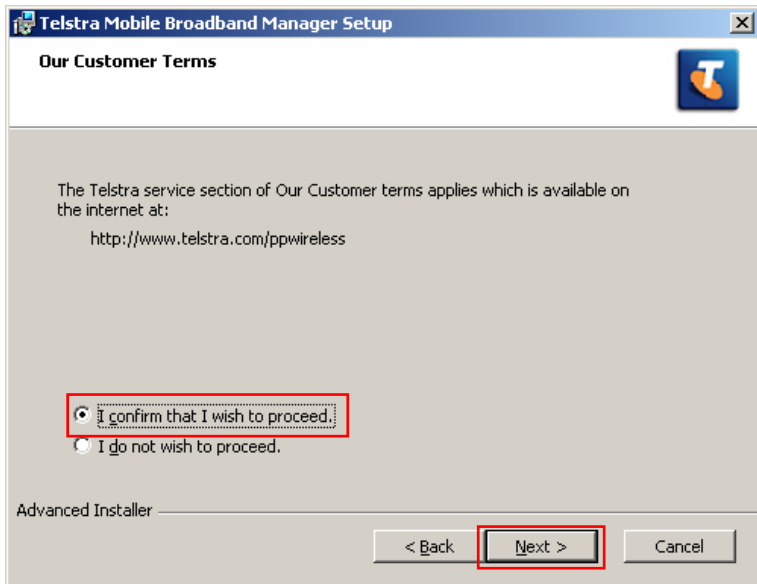
- **Windows users:** Double click the **setup** icon to start the software installation
- **MAC users:** Double-click the Telstra Pre-Paid Mobile Broadband icon to start the install wizard

Windows users: Double click the **setup** icon to start the software installation:

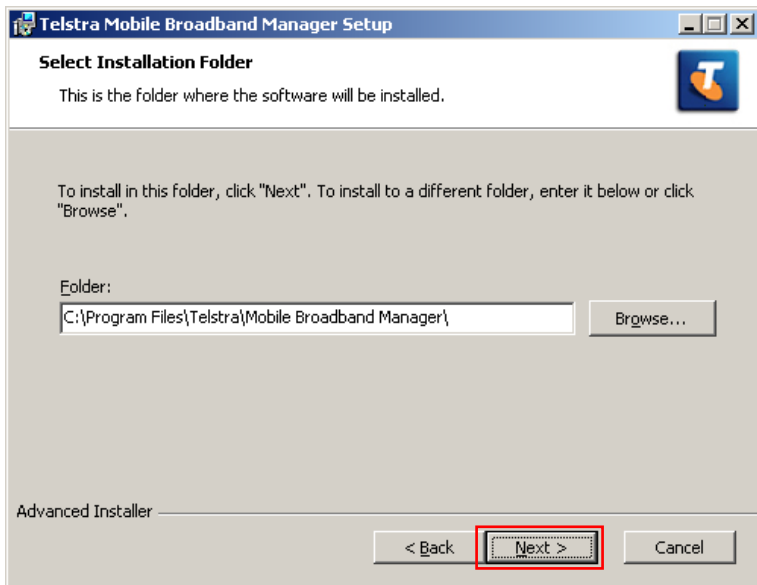


The installation method shown below is for Windows XP. Other systems will follow a similar but not necessarily identical installation process:





Choose 'I confirm....', and then click **Next** to continue



Press **Next** to accept the default folder location, or press **Change** to define your own path.

Please wait a few seconds for the installation to proceed...

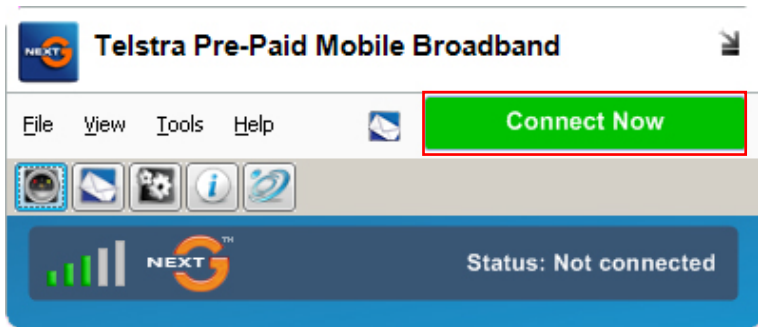


Click **Finish** to complete the installation.






Connect to the internet

After installation the software interface will launch automatically. Your modem will continue installing for a couple of minutes...

You'll be ready to go when you see the **Connect Now** button.



Press **Connect Now** to get on line

LED indicators	Modem Status
 Red	Offline. Not registered on the network
 Green solid	Registered on the 2G network
 Green blinking	Active data transfer on the 2G network
 Blue solid	Registered on the 3G network
 Blue blinking	Active data transfer on the 3G network

- The installation will create a new shortcut on your desktop and a new program listing under Start-Programs
- You may have to reboot your PC or MAC after installation is complete
- If you have problems with the installation please contact your supplier or see our website, www.zte.com.au/ for more assistance and FAQ's
- If you can't connect to the internet check your SIM card is inserted correctly, contact your service provider and check your account is active.

Using your USB Modem

- Press **Connect Now** to establish a data connection using your USB modem
- Launch your browser or other software
- When you have finished your internet or email connection remember to return to the software interface and press **Disconnect** to end your session
- If the software has been minimized then double click the small icon on the task bar to re-open the application window

TIP

After the computer wakes from hibernation or standby mode you may need to remove and insert the modem

Note: The modem is locked to Telstra. If you use a SIM card from another provider you may not be able to connect to the network. Consult Telstra for more details or to unlock your device.

MicroSD card

If you use a MicroSD card in your modem your computer will display a removable disk related to the MicroSD card. You can then use the modem as a flash drive to store and transfer files.

MicroSD cards supported to 2GB are FAT 16 format.

MicroSD HC cards supported to **8GB** are FAT 32 format.

If you want to remove the modem please use the Safe Removal of Hardware to stop the removable disk first.

External Antenna Port

Only use the correct antenna as recommended by the manufacturer. Insert and remove the connection carefully. Do not pull on the cable to remove the connection.

Help

Click **Help** to access the system help and FAQ's.

Troubleshooting

If you have any problems with your connection or modem please consult the manual and check this section. If the problem still exists contact your service provider or check our website for more details at www.zte.com.au

Problem	Possible Causes	Suggested Solution
The user interface doesn't start after the modem is plugged in.	PC configuration is not correct. (No autorun)	Start the program manually by going Start→ Program Files or use the shortcut on the desktop.
The modem has no signal.	The antenna is at the wrong angle or position.	Adjust the angle and position of the USB modem.
	You have no network coverage.	Try moving location until you get good reception.
	SIM card requires a PIN number	Remove your SIM. Insert into a mobile handset and unlock the PIN function.

Problem	Possible Causes	Suggested Solution
Data connection failed.	You have no network coverage.	Try moving location until you get good reception.
The modem cannot connect to the internet when overseas	You don't have international roaming enabled on your plan.	Consult your service provider before you go overseas to enable roaming.
No warning tone	The PC soundcard is disabled or on low volume	Check the audio card and adjust the volume.
The MicroSD card cannot be read or is not found.	Re-insert the MicroSD card. The maximum capacity is 8GB SDHC card	Try another MicroSD card and make sure the capacity and format is correct.

Software Removal

If you wish to uninstall the application please follow the procedures below:

PC

Start → Control Panel → Add and Remove Programs (or equivalent)

Follow the prompts and press Yes to continue

MAC

Go to Applications

Drag the Telstra Pre-Paid Mobile Broadband icon to your trash.

Precautions and Safety Information

- Some electronic devices are susceptible to electromagnetic interference. The modem is a transmitting device and may cause interference to sensitive electronic equipment such as audio systems, vehicle systems and medical equipment. Please consult the manufacturer of the other device before using the modem.
- Operating of laptop or desktop PCs with the modem may interfere with medical devices like hearing aids and pacemakers. Please keep the modem more than 20 centimetres away from such medical devices. Turn the modem off if necessary. Consult a physician or the manufacturer of the medical device before using the modem near such devices.
- Be aware of the regulations when using the modem at places such as oil warehouses or chemical factories, where there are explosive gases or explosive products being processed. Turn off your modem as instructed.
- Don't touch the antenna area unnecessarily whilst connected. This can affect your modem performance and reduce the signal quality.
- Store the modem out of the reach of children. The modem may cause injury or get damaged.

- The modem contains sensitive electronic circuitry. Do not expose the modem to any liquids, high temperatures or shock.
- Only use original accessories or accessories that are authorized by the manufacturer. Using unauthorized accessories may affect your modem's performance, damage your modem and violate related national regulations.
- Avoid using the modem in areas that emit electromagnetic waves or in enclosed metallic structures eg lifts.
- The modem is not waterproof. Please keep it dry and store it in a cool, dry place.
- Don't use the modem immediately after a sudden temperature change eg from an air conditioned environment to high temperature and humidity outside. In such cases there could be condensing moisture inside the modem which can cause internal damage. Unplug the modem and leave it for 30 minutes before use.
- Always handle the modem with care. Be careful not to drop or bend the modem.
- There are no user serviceable parts inside the modem. Unauthorised dismantling or repair will void the warranty.

Radiation from Electronic Devices

The USB Wireless modem is a transmitting device with similar output power to a mobile phone. It uses an internal or external antenna to connect to the mobile network. To get the best performance from your device do not cover or shield the device in any way as this will lead to increased output power. Always leave a clear space around the device to allow the transmit and receive signals to propagate. It is not intended to be used as a handheld or body worn device but SAR tests have been successfully completed in accordance with the Australian regulatory requirements.

Declaration of Conformity

We declare under our sole responsibility that the product(s) detailed in this manual, and in combination with our accessories, conform with the essential requirements of The Radio Communications Standard (Electro-magnetic Radiation Human Exposure) 2003 and the Australian Communications and Media Authority Section 376 of the Telecommunications Act 1997.

The maximum SAR result recorded is 0.863 W/Kg in UMTS 2100 mode.

N14945



Technical Specifications

Network compatibility	UMTS 850, 1900, 2100 MHz
	GSM 850, 900, 1800, 1900 MHz
Dimensions	86.5mm x 26.6mm x 10.4mm
Weight	Approx. 28g
Data Rates	HSUPA Mode up to 2.0Mbps*
	HSDPA Mode up to 7.2Mbps*
	UMTS Mode up to 384 Kbps*
	EDGE Mode up to 236.8 Kbps*
	GPRS Mode up to 57.6 Kbps*
Voltage	5V
Current	Resting: 100mA rms Max: 450mA rms
Max Emitted Power	In 3G WCDMA Mode: 250mW In 2G GSM/GPRS Mode: 2W
Interface	USB 2.0
Operating systems	Windows 7, XP SP2, SP3, Vista Apple MAC OS X 10.5 and above
Memory card	Up to 8GB MicroSDHC
Temperature	-5°C to +45°C

* Actual speeds will be less. Speeds may vary due to congestion, distance from the cell, local conditions, hardware, software and other factors.